

# Product Catalog

Better healthcare for all

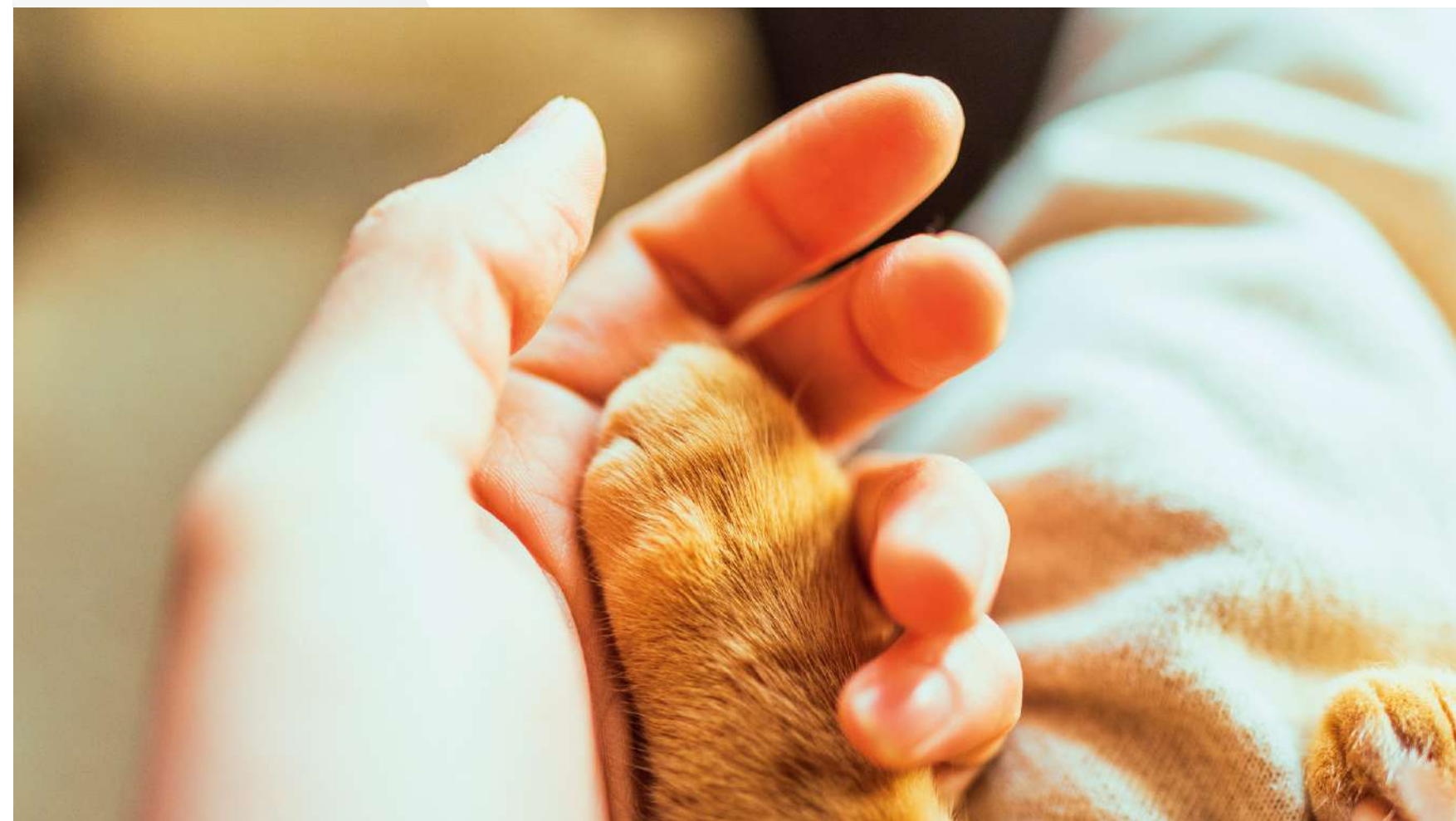


LinkedIn Facebook Instagram

🔍 | Search Mindray Animal Medical

[www.mindrayanimal.com](http://www.mindrayanimal.com)  
[service@mindrayanimal.com](mailto:service@mindrayanimal.com)

P/N:ENG-Product Catalog-230230X40P-20240301  
©2024 Shenzhen Mindray Animal Medical Technology Co., Ltd. All rights reserved.





## About Us

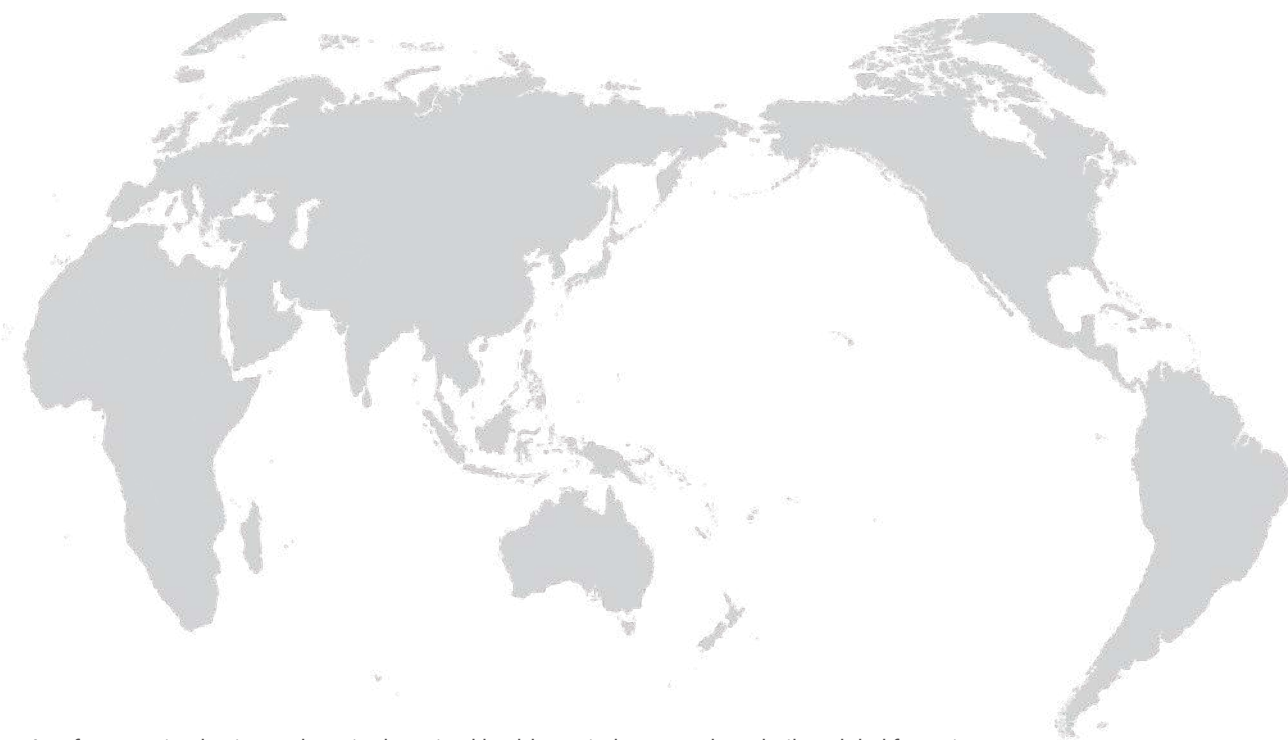
As the public awareness of animal care continues to increase, the global animal medical equipment market has maintained a double-digit compound annual growth rate in recent years, which exceeds that of human medical equipment market. The animal medical industry has a great potential to flourish in the years to come.

Shenzhen Mindray Animal Medical Technology Co., LTD. (short as Mindray Animal Medical), as a new wholly-owned subsidiary of Mindray Group, is dedicated to providing advanced medical devices and comprehensive solutions for various types of animals.

With a broad portfolio of products that covers Medical Imaging Systems, In-Vitro Diagnostics, Patient Monitoring & Life Support of animals, we're improving the healthcare experience for animals and enhancing confidence for animal caregivers.

Specializing in innovative research and development for animals, Mindray Animal Medical takes a solid social responsibility, constantly improving various solutions for animal healthcare and promoting the development of the global industry.

## A Global Footprint Promote Industry-University-Research Cooperation



As a fast-growing business player in the animal healthcare industry, we have built a global footprint, with our products and solutions serving more than 100 countries and regions over the world.

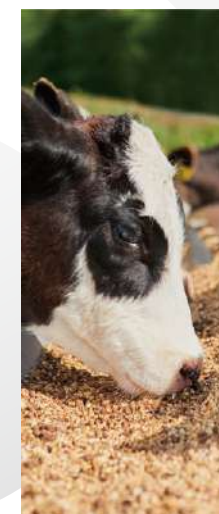
In China, our products and solutions have been serving nearly 15,000 animal hospitals and more than 70% of animal research institutions, and we have established cooperation with a large number of leading veterinary universities and medical experts.

In the international market, we have been chosen by many leading veterinary institutions as their trusted partner. Our products and solutions have been widely recognized across the world including the United States, UK, Germany, France, Italy, Spain and more.

## Comprehensive & Competent Solutions for Various Scenarios



Companion Animals



Farm Animals



Exotic Animals



Laboratory Animals

Powered by the leading R&D capabilities and in-depth customer insights, Mindray Animal Medical delivers comprehensive solutions which efficiently satisfy all sorts of demands of veterinarians in various clinical scenarios. Our Medical Imaging Solution, OR Solution, and In-Vitro Diagnostics Solution provide a broad portfolio of products in the diagnosis, treatment, and monitoring of animals, including Portable and Cart-based Color Ultrasound Systems, Digital Radiography Imaging System, Patient Monitor, Respiratory Anesthesia Machine, Rigid and Flexible Endoscope, Infusion Pump, Hematology Analyzer, Biochemistry Analyzer, PCR System, Urine Analyzer, etc., striving to create more efficient workflows and more user-friendly experience.

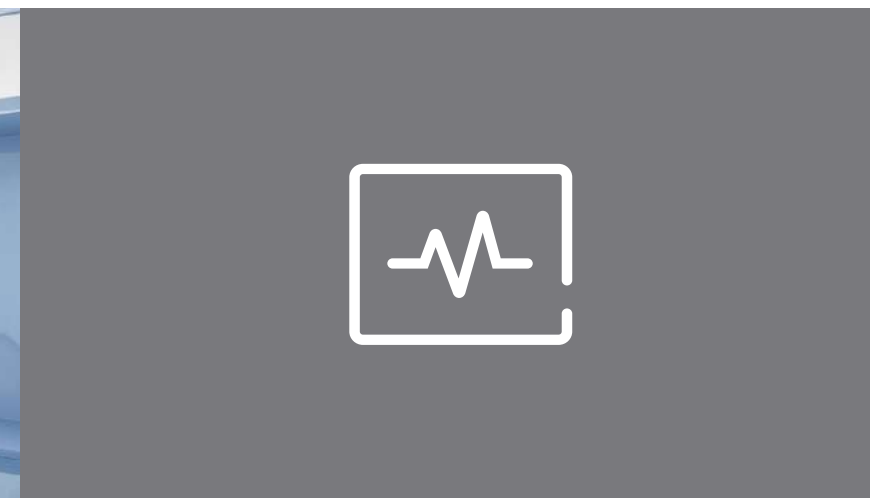
Covering not only animal hospitals for dogs, cats, and other companion animal diagnosis and treatment, but also farm animals, exotic animals and laboratory animals, our abundant products can be used for clinical practices in various application scenarios.

Together with global experts, Mindray Animal Medical is committed to offering equal access to high-quality healthcare for animals by providing comprehensive and competent healthcare product solutions.

# Safe in Monitoring

## Patient Monitoring & Life Support

We adhere to innovations that support safer and more effective animal healthcare. With a broad product portfolio covering patient monitoring, anesthesia machines, endoscope system, infusion systems and surgical lights, etc., we provide adaptive solutions that can meet the needs of various animal care scenarios.





## WATO EX-65 Pro Vet

High-end Veterinary Anesthesia Workstation

As a member of the classic WATO series, WATO EX-65 Pro Vet enables fresh gas flow settings easier and more precisely thanks to digital flowmeter and optimizer. The 15.1-inch capacitive touch screen offers intuitive display and smoother interaction. The ventilator, combined with a lung recruitment function, ensures safer anesthetic procedures.



Enhanced Performance



Veterinary Dedicated

## WATO EX-35/20Vet

Veterinary Anesthesia Workstation

The WATO series offers a full range of ventilation modes with the minimum tidal volume configured as low as 5ml. Various ventilation modes and stable anesthetic delivery increase the safety of inhalation anesthesia. The user-friendly design makes operation easier and simpler.



Enhanced Safety



Better Usability



## Veta 5/3

Veterinary Anesthesia Machine

The Veta series of anesthesia machines combines advanced clinical practice with current cutting-edge technologies. Its intelligent Volume Support mode and integrated design transforms the veterinary anesthetist experience, ensuring the safety of both patient and anesthetist.



Renovating Safety



Refreshing Form



## Veta 1

Research Anesthesia Machine

The Veta 1 is especially designed for laboratory animals, ensuring the safety of both researchers and laboratory animals. The system features accessories tailored to the specific needs and challenges encountered in daily procedures, as well as protocols which significantly increase work efficiency.



Easy & Efficient



Safety & Health



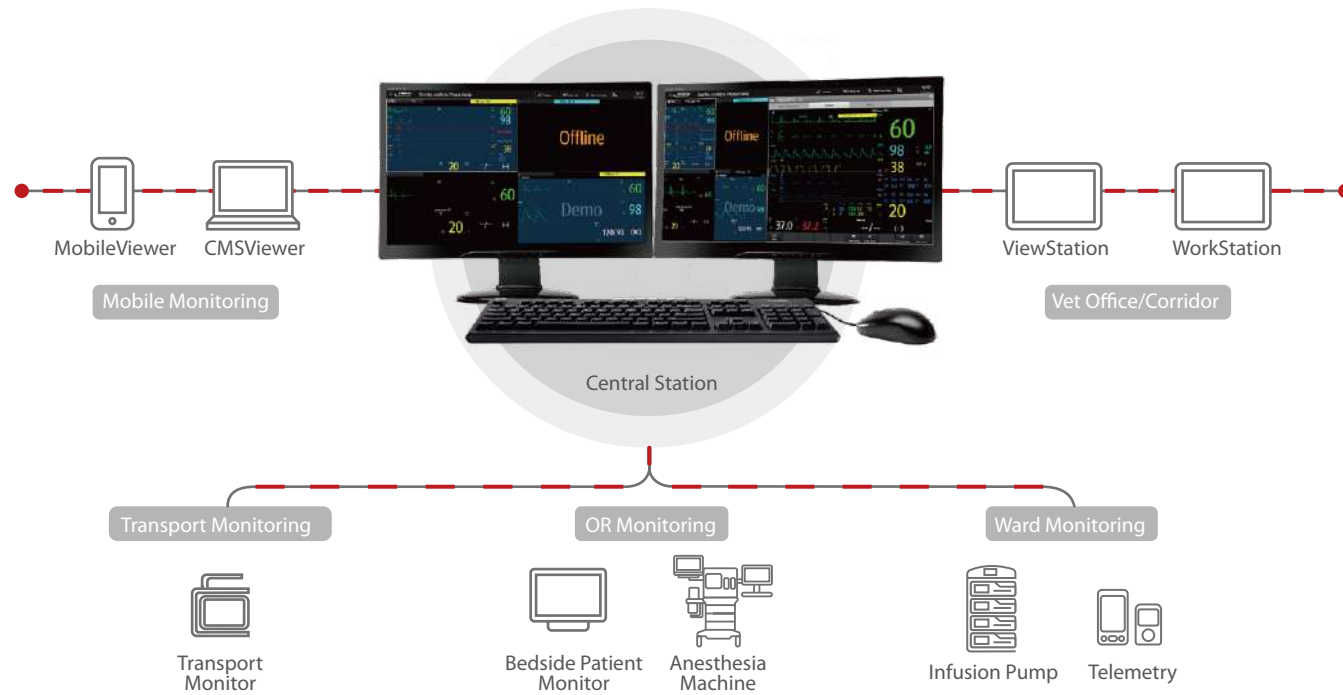
# BeneVision CMS Vet

## Veterinary Central Monitoring System

The CMS Vet can display up to 64 user interfaces from connected devices, and is compatible with E series infusion pumps, veterinary patient monitors, and TM80 Vet. It can support multiple statuses monitoring in real time, storage of up to 240 hours of graphic waveforms, and remote monitoring via smartphone or computer.



- Collect Information
- Data Storage
- Remote Monitoring



# ePM 12M Vet

## High-End Veterinary Modular Monitor

With functioning intelligence and an easy-to-use operating system, the ePM 12M Vet provides excellent performance and precise physiologic parameters. Its modular design and high-end parameters offer practitioners more choices in practical applications.

- Smart & Simple
- Excellent Performance
- Reliable Quality



# uMEC 10/12 Vet

## Veterinary Patient Monitor

Integrated with advanced algorithms and designed especially for animals, uMEC series patient monitors provide more accurate monitoring data to ensure the safety of patients. At the same time, a built-in ET CO2 monitor makes it indispensable for more clinical application scenarios.

- Accurate Monitoring
- Efficiency and Easy to Use
- Reliable and Durable



# Vetal 3

## Portable Veterinary Monitor

As a multi-parameter monitor for animals, Vetal 3 uses optimized parameter algorithms and dedicated accessories for veterinary daily practice to provide more reliable and accurate monitoring for pet doctors. friendly work flow design and stylish design Delivering a more comfortable user experience.

- Accurate and reliable
- Intuitive to use
- Stylish in design





## TM80 Vet

### Telemetry Monitor

With a 3.5-inch capacitive touch screen, the TM80 Vet has a battery life up to 40 hours. An IPX7 waterproof-rating protects the system from liquid splashes. The TM80 Vet supports 3-lead/5-lead ECG monitoring, and is capable of monitoring independently. It can wirelessly pair the telepack with Mindray CMS Vet software to enable real-time remote patient-monitoring.



Mobile Monitoring



Wireless Pairing

## PM-60Vet

### Pulse Oximeter

With its pocket-sized design, the PM60Vet provides an alternative way to monitor SpO<sub>2</sub>. All parameters are displayed on a 2.4" color TFT screen. Both lithium and AA alkaline batteries can be used as a power source.



Portable Design



Precise Monitoring



## Esophageal ECG Probe

The esophageal ECG probe is a one-step solution for monitoring the ECG, heart rate, and temperature of animals from inside the esophagus. Compared to traditional ECG electrodes, this probe can provide a more stable ECG signal with strong anti-interference capability. It is easy to use and will cause no harm to the animal's skin.



Precision



Easy to Use

## BeneHeart R3 Vet

### Veterinary Electrocardiograph

BeneHeart R3 Vet comes with compact and lightweight design, 5-inch color screen offers a clear view of waveforms while a high digital sampling rate and pacemaker signal detection provides reliable results for ECG diagnosis. With LAN/Wireless connection, a paperless informatic solution could be available for data backup and tele-diagnosis.



1.2kg

Compact & Lightweight



Easy to Use

500h

Long Time Operation



## uMED 20 Vet

### Veterinary Debrillator/Monitor

Equipped with advanced biphasic defibrillation technology and energy preset for animal, uMED 20 Vet provides a safe and efficient defibrillation experience. Single operator is available with the unique paddle design. Up to 300 times shock with 200J are supported with internal battery. Power-off test and power-on routine test make the device always ready in any emergency.



Easy to Use



Reliable and Efficiency



Durable



Multi-Parameter Monitoring

## BeneFusion eSP/eVP Vet

High-End Veterinary Syringe/Infusion Pump

The E-series vet infusion pump with 3.5" capacitive screen allows all parameters and common infusion statuses to be viewed easily and without navigation between menu layers. The pump status can also be remotely viewed from Mindray CMS Vet software. Dynamic pressure monitoring, SmartRapid™, and SmartAIR™ technologies safeguard patients from pump error.

- Efficient and Convenient
- Enhanced Safety
- Easy to Manage



## AniFM S3/I3

Syringe/Infusion Pump

The AniFM I3/S3 revolutionize the functionality and versatility of infusion/syringe pumps, with smooth delivery, accuracy and efficient infusion for animals. The pump can ensure the accuracy and safety of the infusion which make it more suitable for strict clinical scenarios. They can be connected to the central monitoring system to centralize data management and integrated view for veterinarians.

- Multi-Devices Interconnection
- Precise Infusion
- Certified Blood Transfusion



## BeneFusion SP1

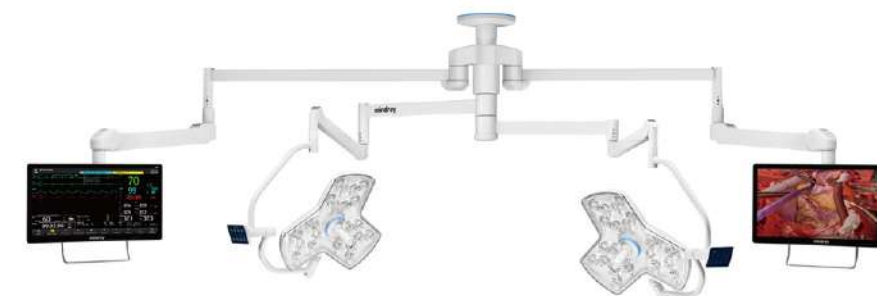
Veterinary Syringe/Infusion Pump

## HyLED C50 Vet

High-End Veterinary LED Surgical Light

The HyLED C50 Vet adopts the new Multi-Patch Superposition Technology (MPST) through the innovative lens group design to create a clear and homogeneous light field. An ultra-small light field with a minimum 14cm area and wide range pattern size can be achieved to meet the specific needs of surgeries. It offers eye-relaxing light and smooth brightness adjustments to effectively reduce doctors' sensitivity to the illumination and relieve their eye strain. Stopless rotation design to all joints, operators are able to position the lights toward the exact surgical field easily. Improve the efficiency of the operating room through modular design.

- See Widely
- Control Easily
- Optimization for Sustainability



## HyLED 580/180 Vet

Veterinary LED Surgical Light

Incorporating Mindray Animal Medical's high-end LED surgery technology, the HyLED 580/180 Vet series provides LED illumination with 3 installation options: wall hanging, ceiling, or mobile, meeting the specialized needs of different hospitals. An antibacterial coating inhibits the growth of staphylococcus aureus to help prevent intraoperative contamination and nosocomial infection, aiding animal safety.

- Antimicrobial Design
- Excellent Illumination

